



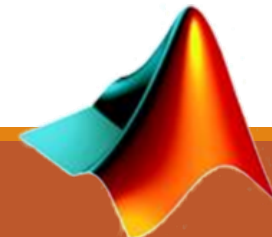
UNIVERSITÀ DEGLI STUDI DI SALERNO

Fondamenti di Informatica

Guida all'installazione di MATLAB

Prof. Arcangelo Castiglione

A.A. 2016/17

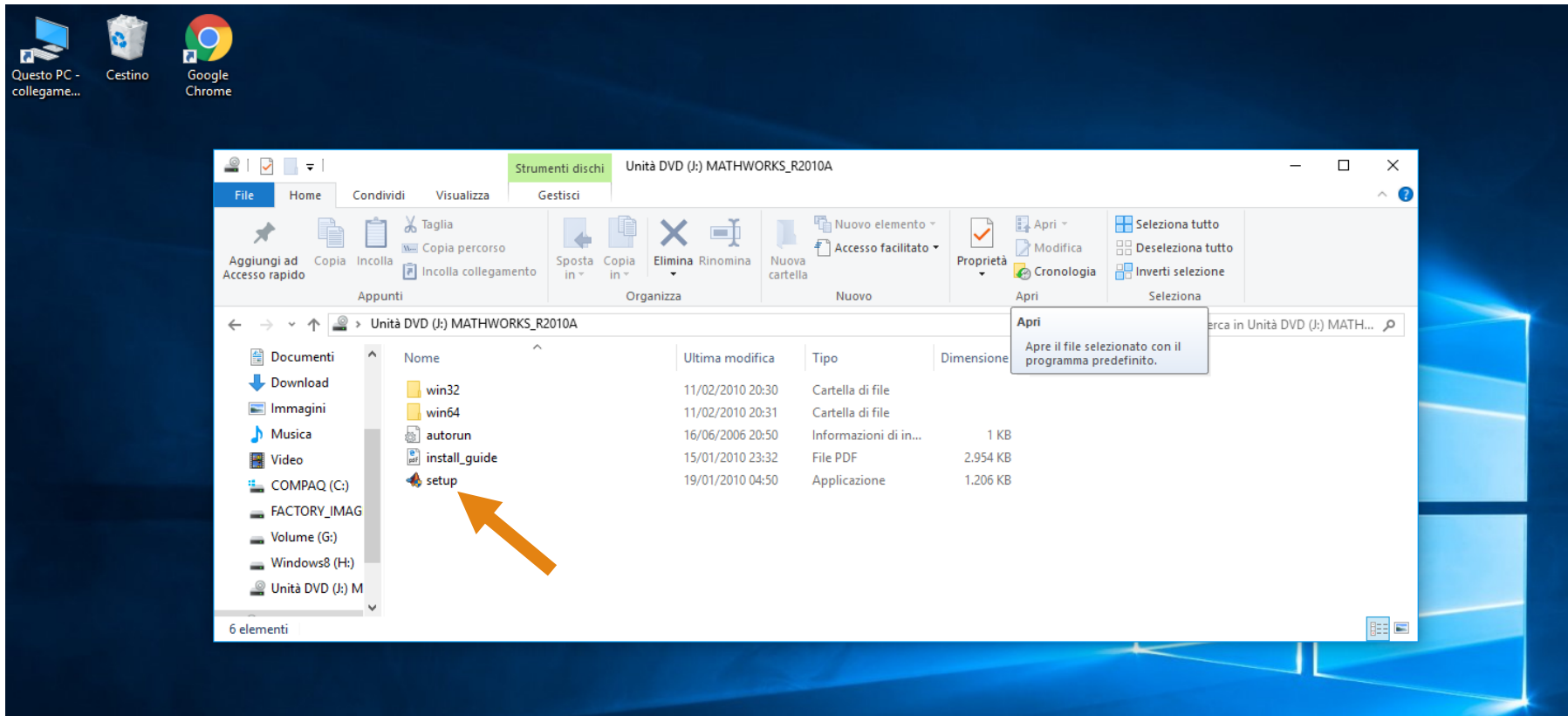


MATLAB

Installazione di MATLAB

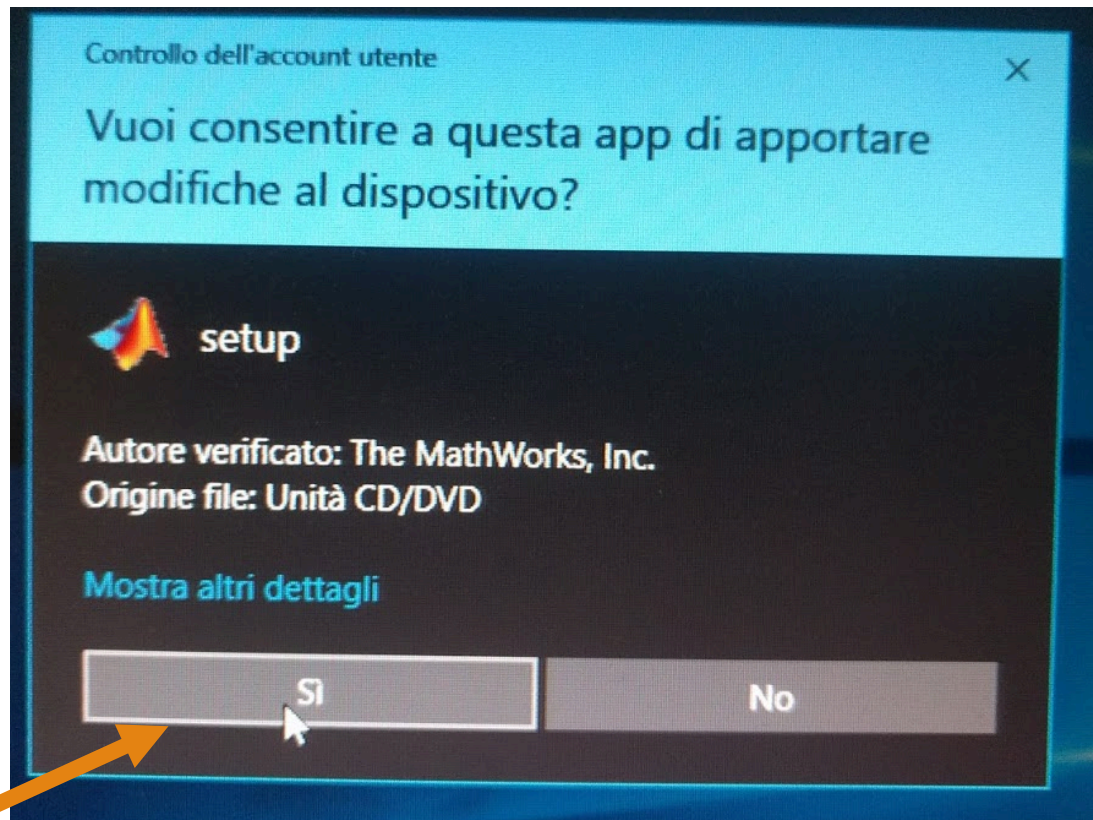
- Sistemi Operativi supportati
 - Windows
 - Mac OS / OS X
 - Linux
 - Etc

Installazione di MATLAB

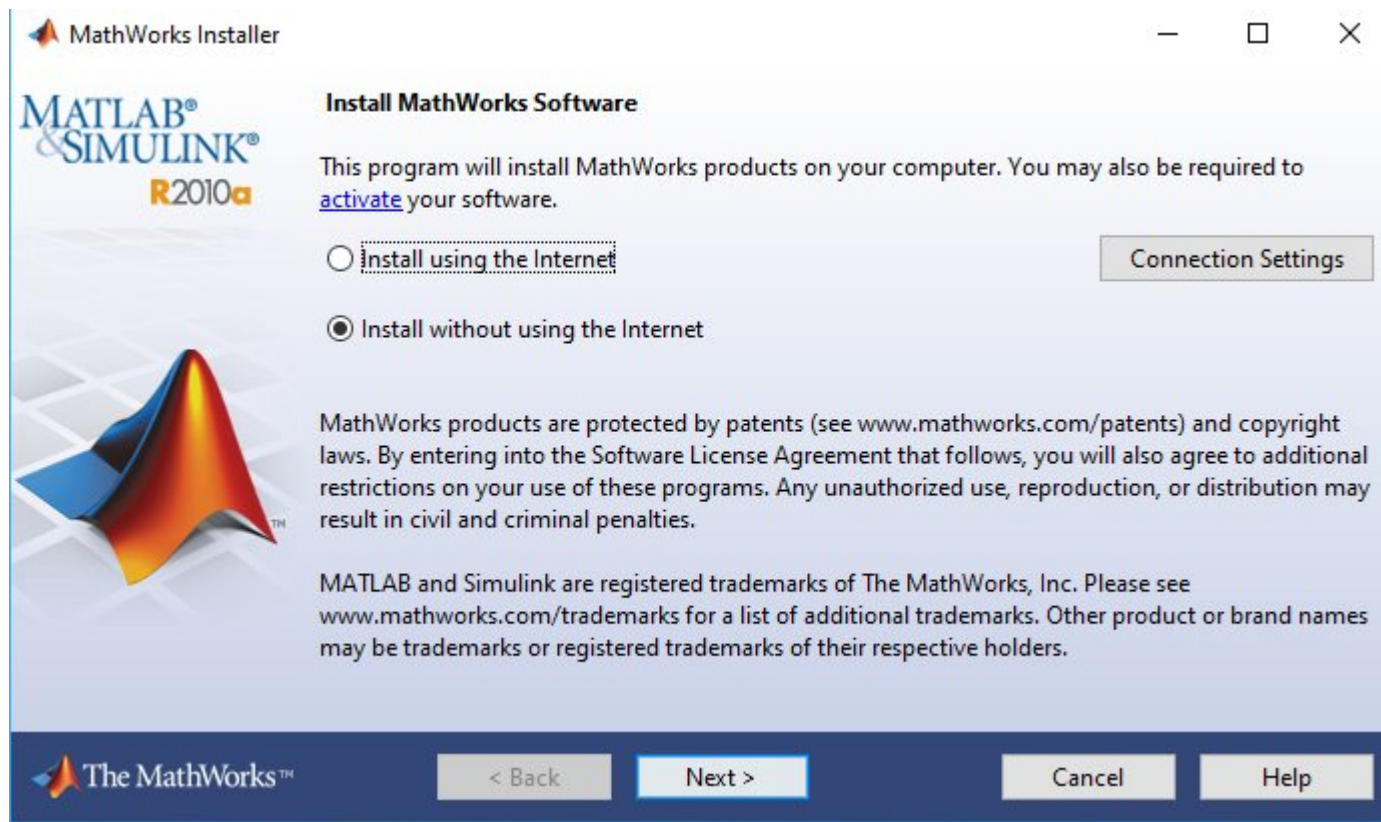


Guida all'installazione di MATLAB

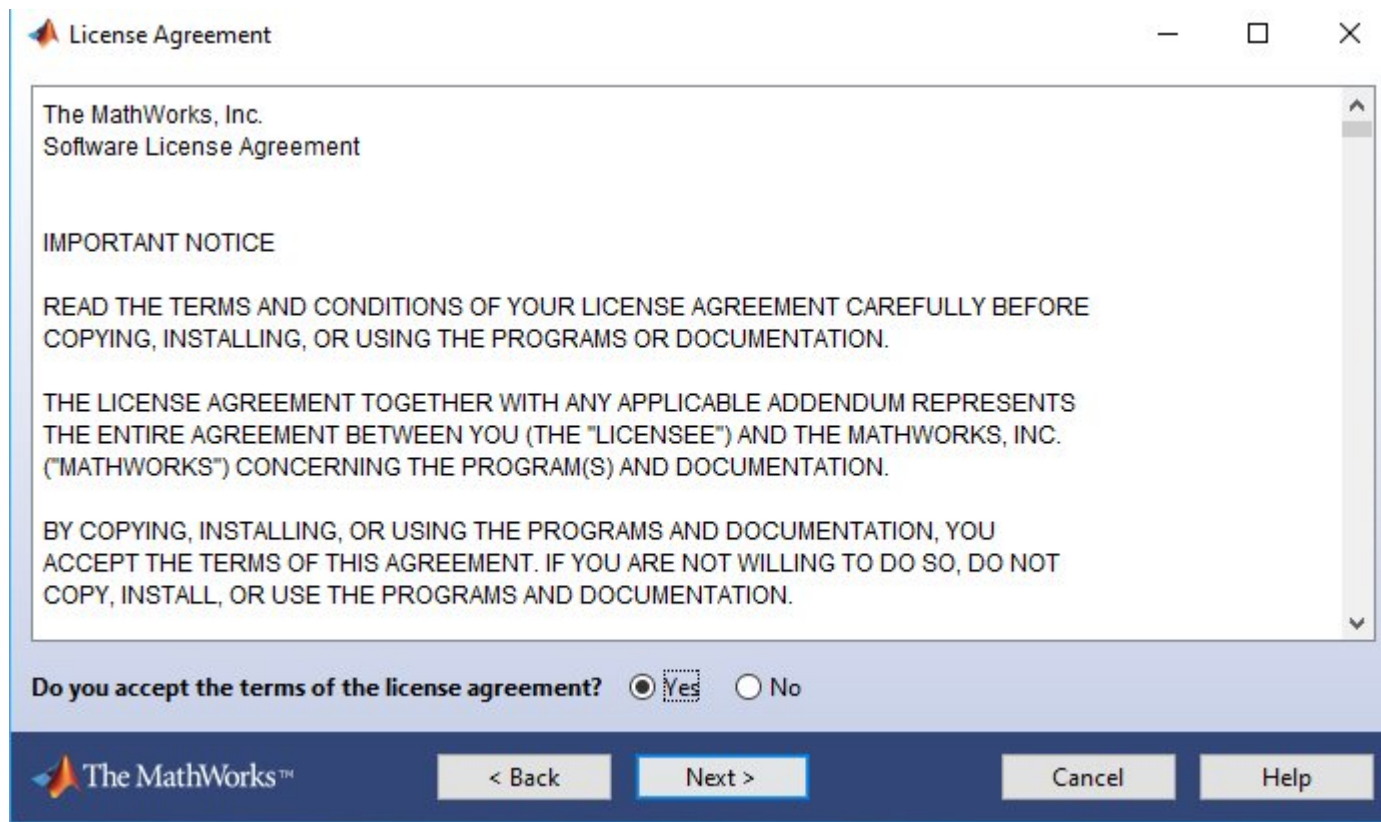
Installazione di MATLAB



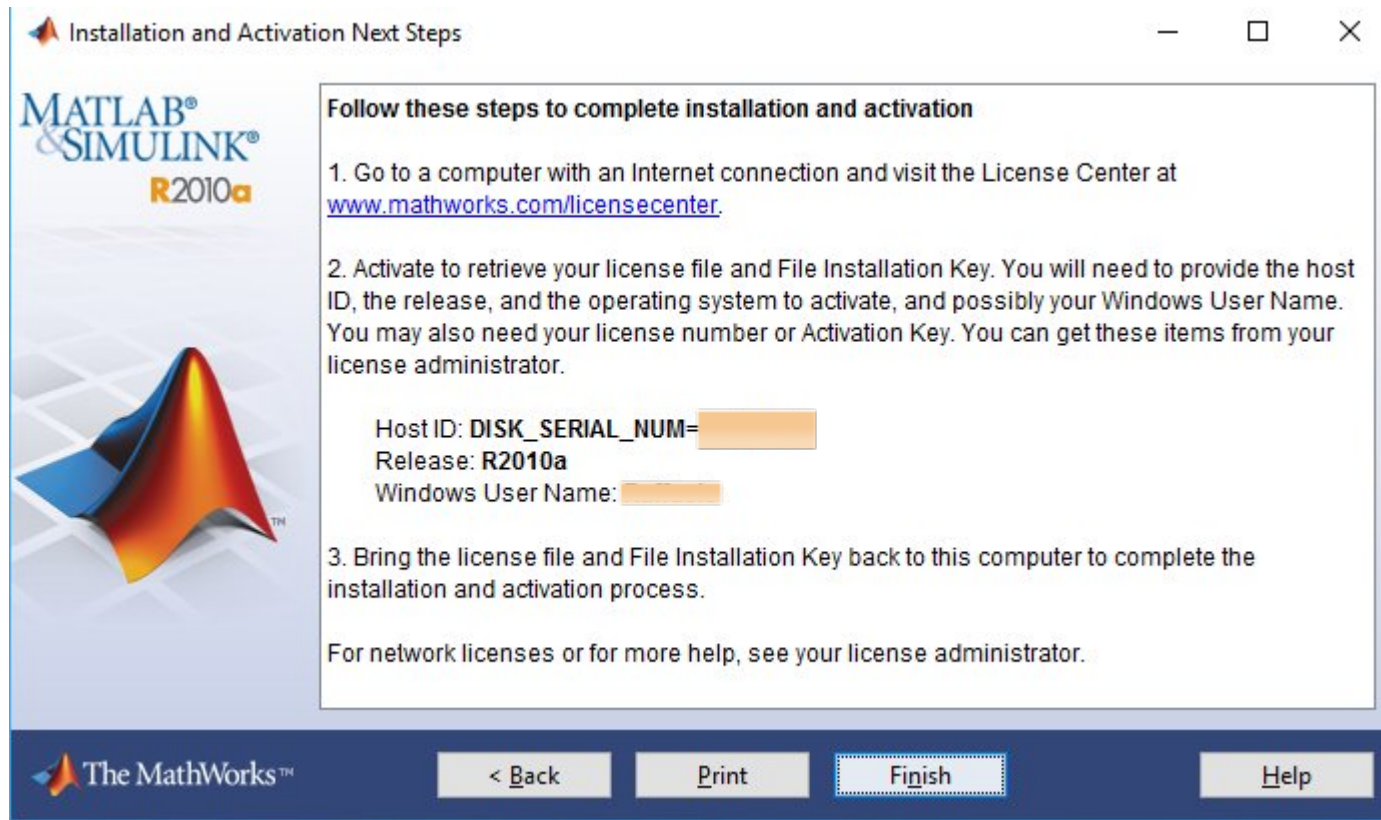
Installazione di MATLAB



Installazione di MATLAB



Installazione di MATLAB



The screenshot shows a window titled "Installation and Activation Next Steps" for MATLAB R2010a. The window contains instructions for completing the installation and activation process. On the left side, there is a logo for MATLAB & SIMULINK R2010a and a 3D surface plot. The main content area has a title "Follow these steps to complete installation and activation" and three numbered steps. Step 1 directs the user to the License Center website. Step 2 details the activation process and provides input fields for Host ID, Release, and Windows User Name. Step 3 instructs the user to bring the license file and key back to the computer. At the bottom, there are navigation buttons: "< Back", "Print", "Finish" (highlighted with a dotted border), and "Help".

Installation and Activation Next Steps

MATLAB®
& SIMULINK®
R2010a

Follow these steps to complete installation and activation

1. Go to a computer with an Internet connection and visit the License Center at www.mathworks.com/licensecenter.
2. Activate to retrieve your license file and File Installation Key. You will need to provide the host ID, the release, and the operating system to activate, and possibly your Windows User Name. You may also need your license number or Activation Key. You can get these items from your license administrator.

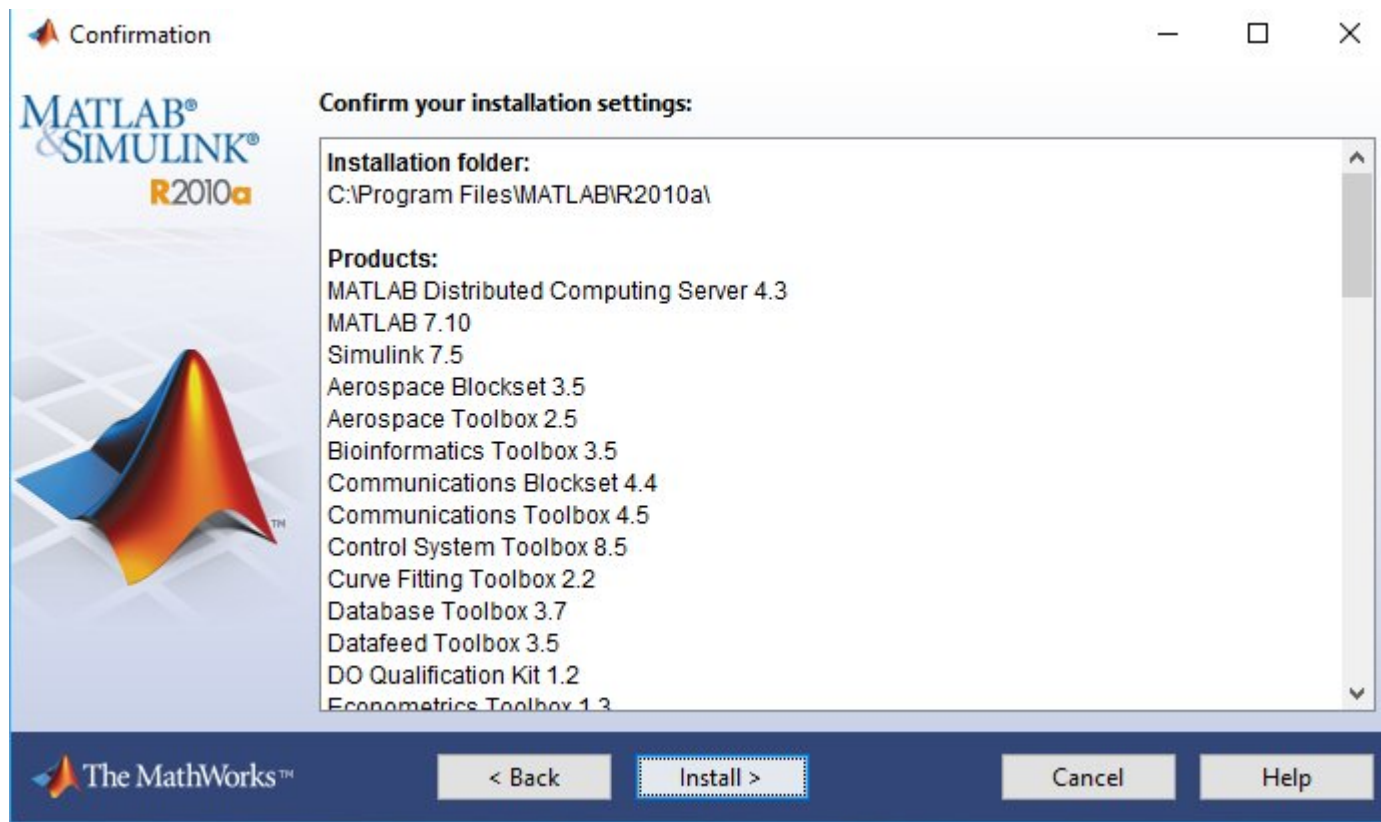
Host ID: DISK_SERIAL_NUM=
Release: R2010a
Windows User Name:
3. Bring the license file and File Installation Key back to this computer to complete the installation and activation process.

For network licenses or for more help, see your license administrator.

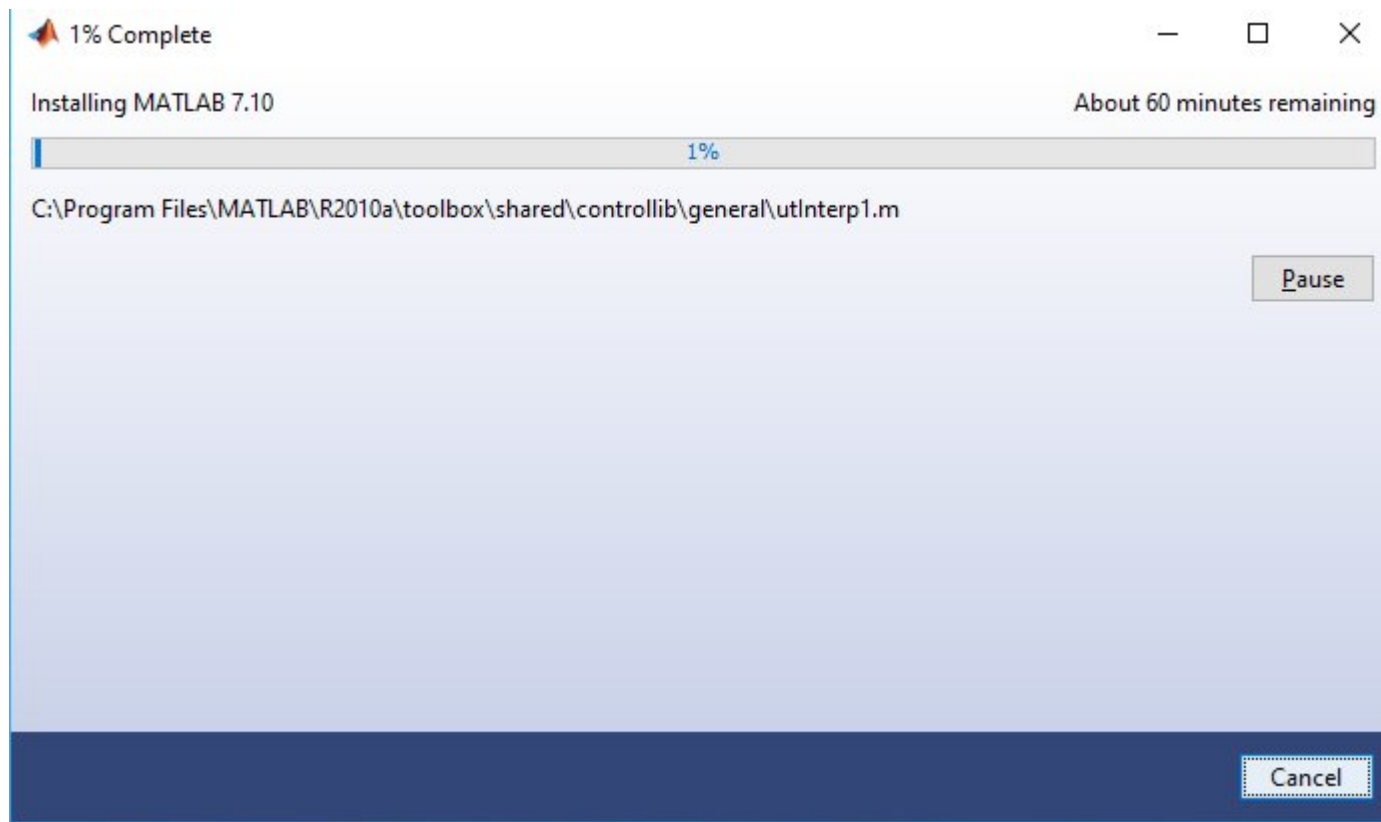
The MathWorks™

< Back Print **Finish** Help

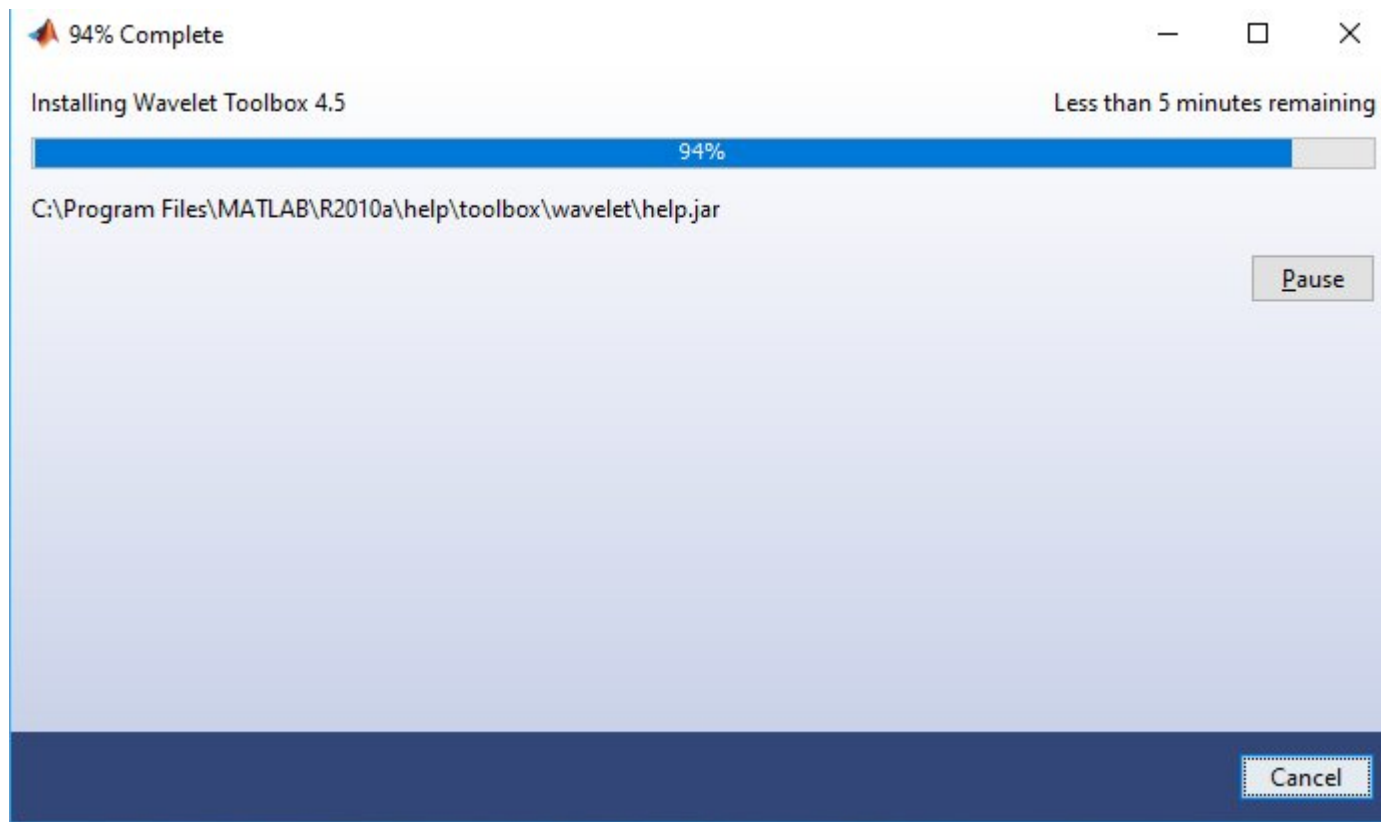
Installazione di MATLAB



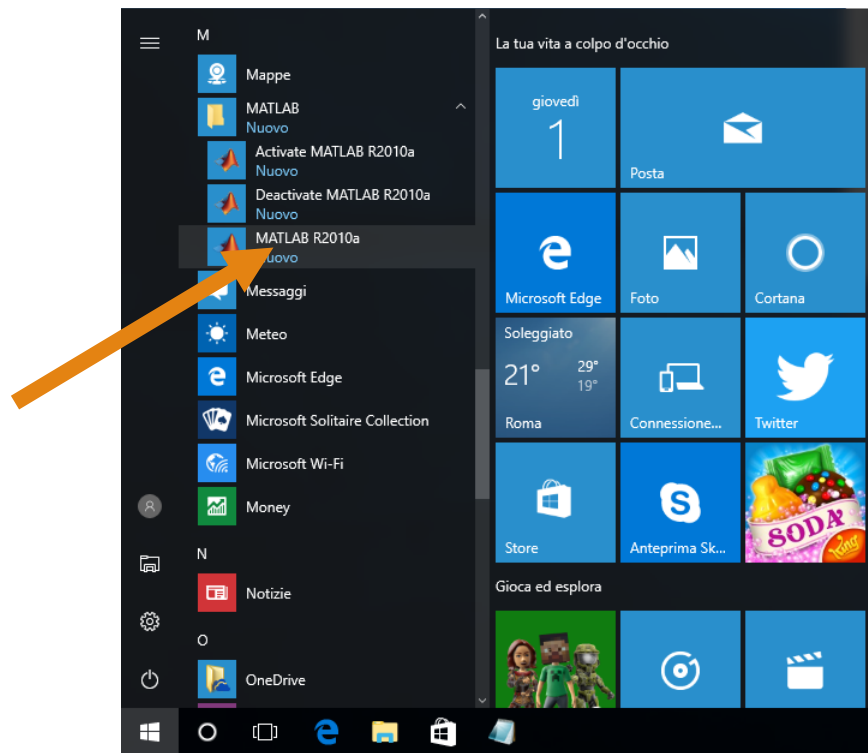
Installazione di MATLAB



Installazione di MATLAB



Installazione di MATLAB



Installazione di MATLAB

